

**Note:**  
**Portico GuySails shall be removed in the event winds expected to exceed 60 mph**

Rev #	Date	By	Description
2	20 JAN 11	KM	UPDATED BLUE GUYLINE LOCATION ON PORTICO SIDE
3	10 Aug.2011	KM	update Base RP-RP dimension, location of RP on base, sighting base image
4	24 Aug 15	JM	Added locations for wall anchors,survey point details, removed wrap torque
5	01MAR2016	KM	Add dimension for brace bar anchor
6	03MAR2016	KM	Add image pullup cable with load binder to corner
7	24JUN2020	KM	Add anchor & survey pts.
8	09JUL2020	KM	add note "Portico guysails shall be removed in the event winds expected to exceed 60 mph"

**Legend**

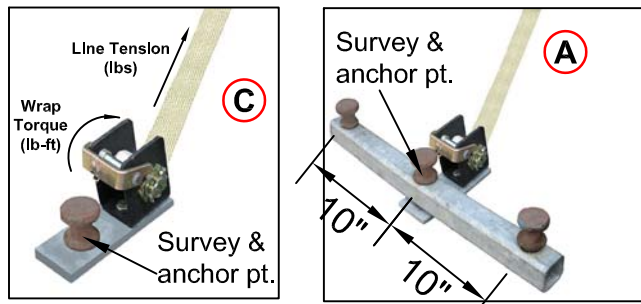
**Earth Anchorage**

**A** = 42" Ø1-1/8" Hogan Double Head Stake  
 Or 3 x 42" x 1-1/8" Double Head Stake  
 For poor soil conditions

**B** = 42" Ø1-1/8" Hogan Double Head Stake

**C** = 30" Ø1-1/8" Hogan Double Head Stake

**D** = 2 x 30" Ø1-1/8" Hogan Double Head Stake in Portico Base

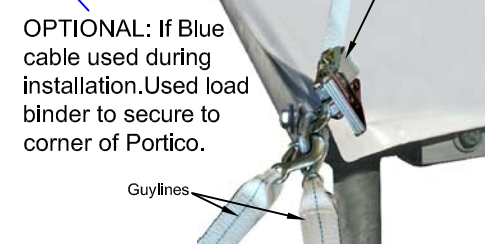
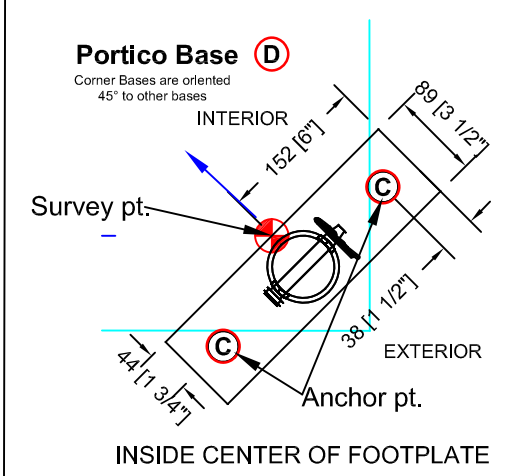
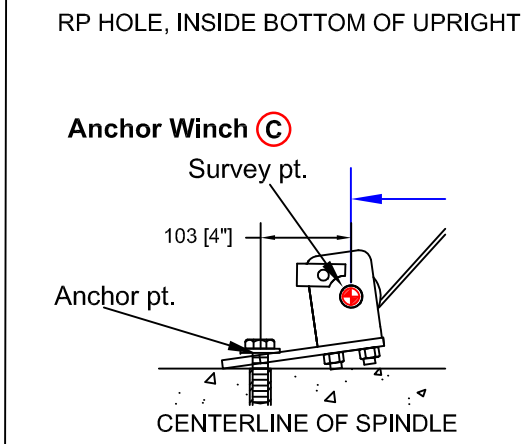
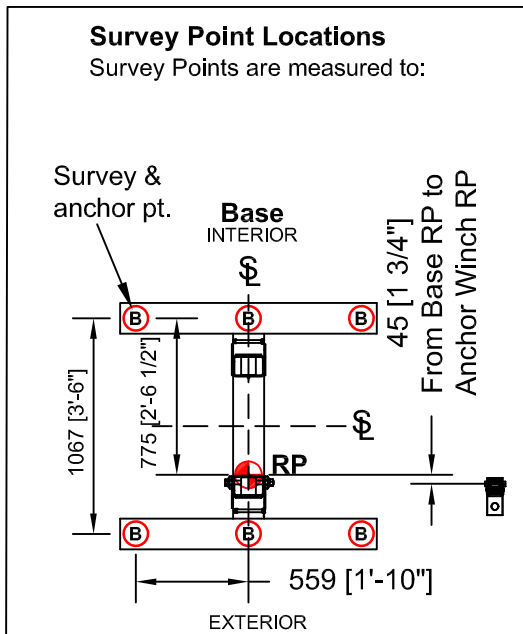
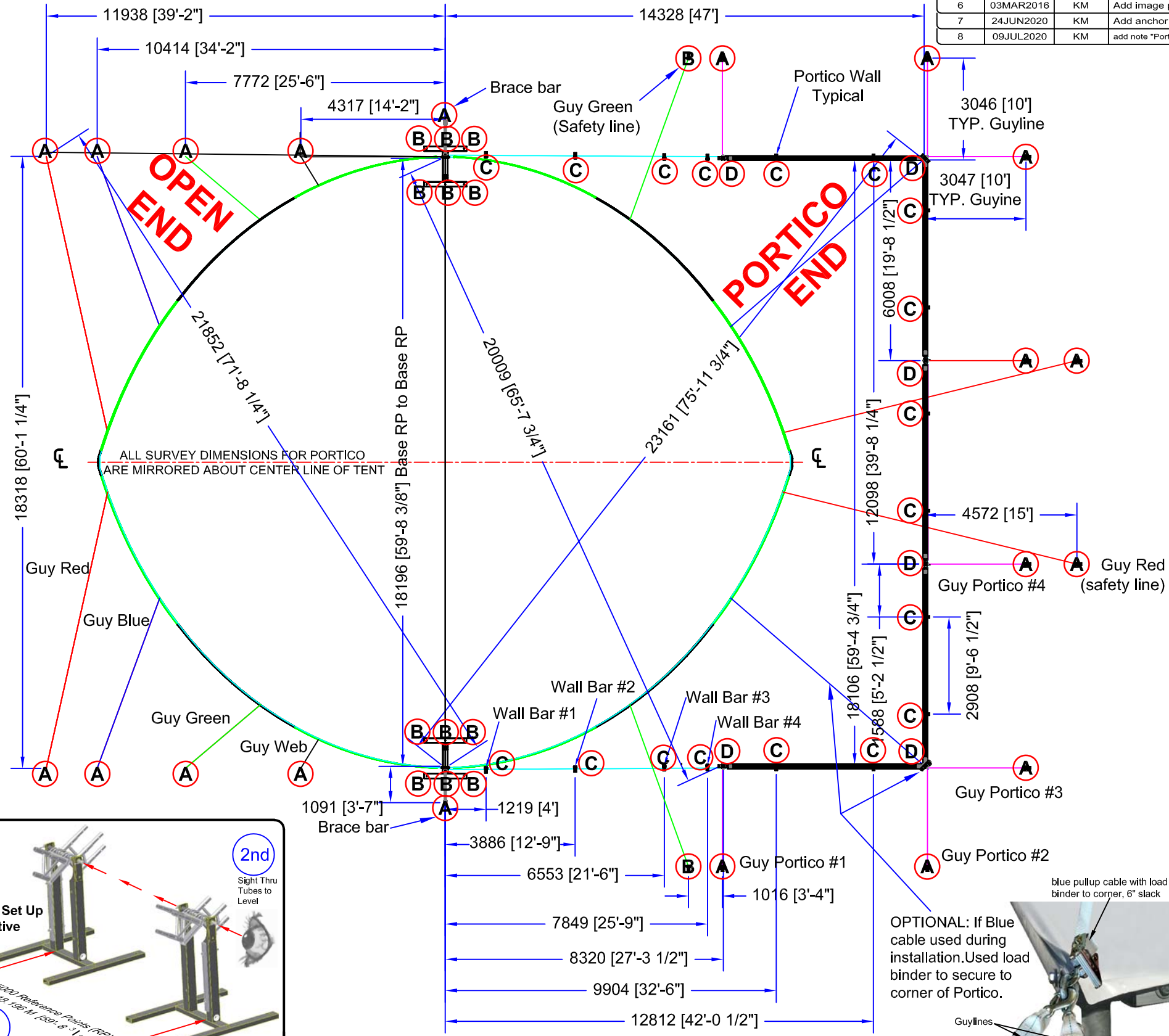
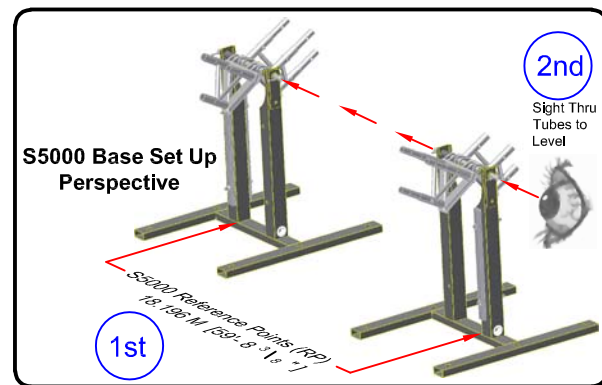


**OPEN END**

	Line Tension (lbs)
Guy Red	800
Guy Blue	980
Guy Green	1440
Guy Web	1600

**PORTICO END**

	Line Tension (lbs)
Guy Portico #1	800
Guy Portico #2	1000
Guy Portico #3	1875
Guy Portico #4	960
Guy Red	0
Guy Green	0
Wall Bar #1	750
Wall Bar #2	650
Wall Bar #3	650
Wall Bar #4	650
Portico Wall	50



Designed to meet or exceed the following requirements: Design Wind IBC-2003 115MPH Basic wind speed - NBC 4.1.7; DIN4112 Wind pressure 0.5Kpa; Fire - ULC S109, Calif. Fire Marshall, & M2. User Note: Tent integrity is a direct function of installation quality. Follow installation instructions, adding stakes as conditions require. Do not exceed design parameters or local ordinances for public assembly. Stakes & guying indicated on this drawing may or may not be appropriate for soil & site conditions. When in doubt, consult local engineer. Dimensions shown in millimetres unless stated otherwise. **CLIMBING ON TENT CAN RESULT IN INJURY OR DEATH**

\\vstentshare\A\_Product\AAMasterEngineer\50.32.111 SURVEY.DWG Printing: Jul 09, 2020-13:34

**tentnology co.**  
 15427 66th Avenue Surrey B.C. Canada V3S 2A1  
 Tel: (604) 597-8368 Fax: (604) 597-8749 e-mail: tent@tentnology.com

**SADDLESPAN S5000 SL CONCERT PORTICO SURVEY**

Project: S5000 SL	Scale: NTS	Sheet No: 1 of 1
Dwg By: RB	Date: 14 JAN 11	File:
Ck'd By: ALI	App'd: <i>ALI</i>	<b>50.32.111 SURVEY</b>